



# ELEMENT 29

RESOURCES

# ADVANCING COPPER ASSETS IN PERU

CORPORATE PRESENTATION  
July 2024

TSX-V: ECU OTCQB: EMTRF BVL: ECU

# Forward-Looking and Cautionary Statements

Certain statements in this presentation constitute “forward-looking information” within the meaning of applicable securities laws. Forward-looking information relates to future events, future performance and statements that are not historical facts. Forward-looking information can generally be identified by the use of forward-looking terminology such as “may”, “will”, “expect”, “intend”, “objective”, “estimate”, “anticipate”, “believe”, “potential”, “trend”, “indicate” or “continue” or the negative thereof or variations thereon or similar terminology. Forward-looking information in this presentation includes, but is not limited to, statements with respect to the merits of the Company’s mineral properties, the Company’s plans, goals and objectives, the Company’s work programs and potential studies, milestones of the Company, the delivery of a resource estimate, the timing and amount of future exploration and expenditures and the possible results of such exploration. Forward-looking information involves known and unknown risks, uncertainties and other factors which may cause the actual results, performance or achievements of the Company to be materially different from any future results, performance or achievements expressed or implied by the forward-looking information. Such risks include, among others, the risk that the Company will not be successful in completing its plans with respect to its mineral properties and its business; risks relating to the results of exploration activities; the ability of the Company to raise any necessary additional capital and obtain all necessary licenses and permits; future prices of, and demand for, copper and other metals; the Company’s ability to procure equipment and personnel, operating conditions, accidents, and other risks of the mining industry; risks related to the COVID-19 pandemic and the other risks described in the Prospectus. The Company believes that the expectations reflected in such forward-looking information are reasonable, but no assurance can be given that these expectations will prove to be correct and such forward-looking information should not be unduly relied upon. These statements speak only as of the date of this presentation. The Company does not intend, and does not assume any obligation, to update any forward-looking information except as required by law.

## Technical Information

The technical information contained in this document related to the mineral resource estimate of the Elida Copper Project was based upon the disclosure prepared by Marc Jutras, P.Eng., M.A.Sc., Principal, Mineral Resources, Ginto Consulting Inc., a Qualified Person as defined in National Instrument 43-101 Standards of Disclosure for Mineral Projects (“NI 43-101”), who is independent of Element 29 Resources Inc. Refer to the corresponding technical report entitled “NI 43-101 Technical Report, Mineral Resource Estimation of the Elida Porphyry Copper Project in Peru” with an effective date of September 20, 2022 and prepared in accordance with Form 43-101F1. The scientific and technical information contained in this document has been reviewed and approved by Richard Osmond (P.Geo.), President and CEO of Element 29 Resources Inc. and a Qualified Person as that term is defined in NI 43-101.

## Cautionary Note to U.S. Investors Concerning Estimates of Mineral Resources

The mineral resource estimates described in this presentation have been prepared in accordance with the requirements of Canadian securities regulatory authorities, which differ from the requirements of U.S. securities laws. The terms “Mineral Resource”, “Inferred Mineral Resource”, “Indicated Mineral Resource” and “Measured Mineral Resource” are defined in accordance with Canadian National Instrument 43-101, Standards of Disclosure for Mineral Projects (“NI 43-101”) and have meaning ascribed to those terms by the Canadian Institute of Mining, Metallurgy and Petroleum (“CIM”), as in the CIM Definition Standards on Mineral Resources and Mineral Reserves adopted by CIM Council, as amended. These definitions differ from the definitions in requirements under United States securities laws adopted by the United States Securities and Exchange Commission (“SEC”). Under Canadian rules, estimates of Inferred Mineral Resources may not form the basis of feasibility or pre-feasibility studies, except in rare cases. Investors are cautioned not to assume that all or any part of an Inferred Mineral Resource exists or is economically or legally mineable. An Inferred Mineral Resource is that part of a Mineral Resource for which quantity and grade or quality are estimated on the basis of limited geological evidence and sampling. Geological evidence is sufficient to imply but not verify geological and grade or quality continuity. An Inferred Mineral Resource has a lower level of confidence than that applying to an Indicated Mineral Resource and must not be converted to a mineral reserve. It is reasonably expected that the majority of Inferred Mineral Resources could be upgraded to Indicated Mineral Resources with continued exploration. United States investors are cautioned not to assume that all or any part of Mineral Resources determined in accordance with NI 43-101 and CIM standards will qualify as, or be identical to, mineral resources estimated under SEC standards applicable to U.S. companies. Accordingly, information contained in this presentation may not be comparable to similar information made public by U.S. companies subject to the reporting and disclosure requirements under the United States federal securities laws and the rules and regulations thereunder.



# Our Company



## COPPER FOCUSED

Advancing large porphyry copper deposits

## EXPERIENCED TEAM

Peru operating experience

## PROVEN MINING JURISDICTION

Peru is 2<sup>nd</sup> largest copper producer globally

## RESOURCE GROWTH

Building on established resources

## CATALYSTS

Discovery and resource expansion potential

## Who We are

Element 29 Resources Inc. (E29) is advancing both its Elida copper deposit and Flor de Cobre project in Peru with a focus on growing its copper resources and expanding mineralization on multiple, untested targets. Both projects have returned well-mineralized copper intercepts from recent drilling and are strategically located at lower elevations and near major infrastructure including roads, powerlines, ports, water, and skilled workforces.



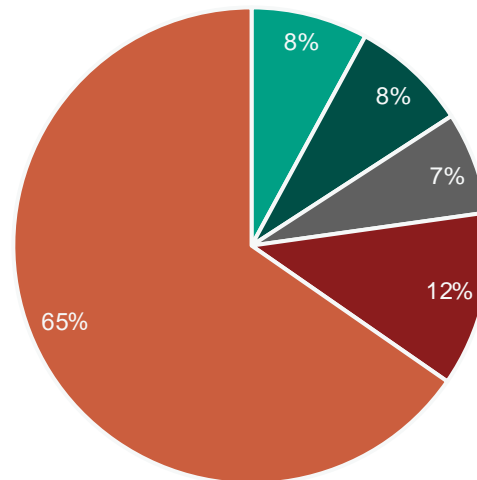
# Capital Structure

Capital Structure – January 2024	
Shares Issued	106.2 million
Fully Diluted	141.4 million
Options (Weighted average exercise price C\$0.49)	6.6 million
Total Warrants	28.7 million
<ul style="list-style-type: none"><li>• 5.7 million warrants (Dec. 2024, \$0.85)</li><li>• 3.9 million warrants (Jan. 2025, \$0.30)</li><li>• 19.0 million warrants (Sep 2025, \$0.25)</li></ul>	

TSX-V: **ECU**  
OTCQB: **EMTRF**  
BVL: **ECU**



Supportive strategic partners  
Insiders aligned with shareholders



- Acasta Partners
- Resource Capital Funds
- Management & Board
- GlobeTrotters Resource Group

# Leadership

<p><b>Richard Osmond</b> CEO (P.Geo., ICD.D)</p>	<ul style="list-style-type: none"> <li>• Geoscientist and junior mining executive with over 25 years experience.</li> <li>• Involved in discoveries at Vale's Voisey's Bay Ni-Cu-Co mine and Glencore's Raglan Ni-Cu-PGM mine.</li> <li>• Senior technical lead with Anglo American responsible for North America and Europe focused on Ni exploration in northern Canada, Alaska and Scandinavia as well as IOCG and porphyry Cu-Mo exploration in Mexico and Alaska.</li> </ul>
<p><b>Brad Mercer</b> Chair (P.Geo.)</p>	<ul style="list-style-type: none"> <li>• Geoscientist and mining executive who retired in 2022 as Chief Operating Officer for Capstone Copper Corp. after 17 years of service and helping to build Capstone from a \$20 million into a \$5 billion company.</li> </ul>
<p><b>Patrick Elliott</b> Director</p>	<ul style="list-style-type: none"> <li>• Geoscientist and junior mining executive with 17 years experience including discoveries at Teck's Zafranal porphyry copper deposit and Midas Gold's Golden Meadows deposit.</li> <li>• President &amp; CEO of Forte Minerals and VP Corporate Development and Strategy for Globetrotters Resources Group.</li> </ul>
<p><b>Chet Idzisek</b> Director</p>	<ul style="list-style-type: none"> <li>• Geoscientist and junior mining executive with over 40 years of experience.</li> <li>• Awarded Prospector of the Year from the PDAC in 1994 for his roles in the discovery of the Eskay Creek VMS deposit in northern British Columbia and the Cobre Panama porphyry copper deposit in the Republic of Panama.</li> </ul>
<p><b>Mary-Carmen Vera</b> Director</p>	<ul style="list-style-type: none"> <li>• Peruvian geological engineer.</li> <li>• Member of the Board of Directors for the PDAC with extensive experience in the development and management of ESG and Sustainability Best Practices for the mining and mineral exploration sectors.</li> </ul>
<p><b>Manuel Montoya</b> CTO – Country Manager</p>	<ul style="list-style-type: none"> <li>• Peruvian geoscientist with over 30 years experience including as Principal Geologist for the Andes Exploration Group at Teck.</li> <li>• Integral part of the Teck exploration team responsible for the discovery of the Zafranal porphyry copper-gold deposit in southern Peru.</li> </ul>
<p><b>Duane Lo</b> CFO (CPA, CA)</p>	<ul style="list-style-type: none"> <li>• Financial mining executive with over 20 years experience developing and operating mining projects in multiple jurisdictions including USA, Africa, Brazil, Mongolia.</li> <li>• Currently, CFO of Ridgeline Minerals Corp. and Entrée Resources Ltd.</li> <li>• Past CFO of Mason Resources Corp. (sold to Hudbay) and worked for Luna Gold, First Quantum and Deloitte.</li> </ul>

# Peru: a Country Enriched with Copper

- Peru is the **second largest copper producer globally (2.5 Mtpa)**.
- **The total copper inventory of Peru is 238 Mt**, as reported by SPGlobal<sup>1</sup>.
- Peru is home to **3 of the largest 10 copper mines in the world**.
- Copper deposits are distributed throughout the Andean magmatic arcs of Peru. Porphyry copper systems represent the largest deposits.



<sup>1</sup> S&P Global Market Intelligence. Country/Region Ranking by Reserves & Resources, Aggregate Copper in Reserves and Resources.

# Peru: a Proven Mining Jurisdiction

- **MINING FRIENDLY:**

- Mining comprises over 60% of Peru's exports and approximately 10% of GDP.
- Mines get permitted and built in Peru.

- **LOW COST:**

- Copper production costs are relatively low, globally.

- **RELATIVELY STABLE JURISDICTION:**

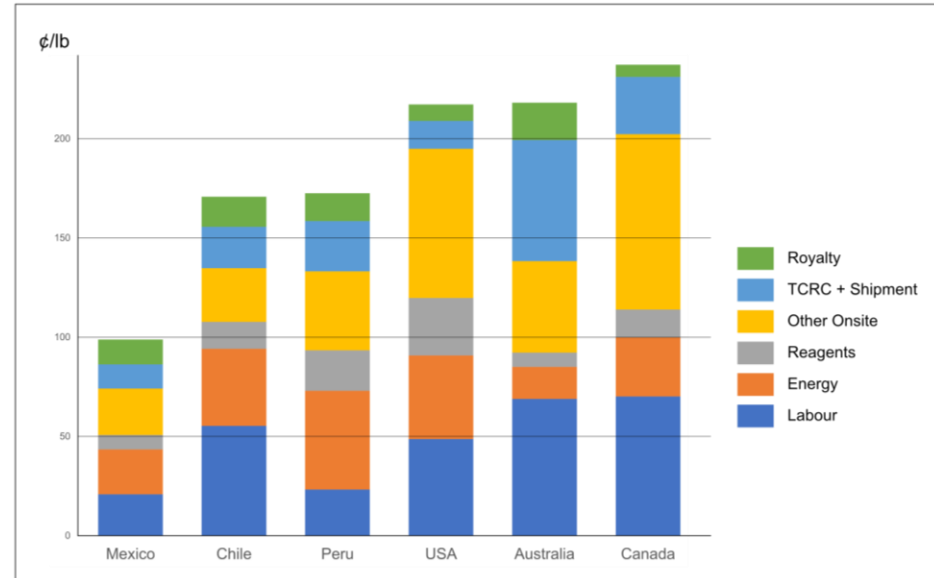
- Peru has Free Trade Agreements with Canada and the United States.
- Canada-Peru Bilateral Investment Treaty ensures protection of investments.

- **PROVEN INVESTMENT SUPPORT:**

- Second best Investment-Grade rating in all Latin America (after Chile):

<u>Country</u>	<u>S&amp;P</u>	<u>Fitch</u>	<u>Moody's</u>
Peru	BBB	BBB	Baa1

Comparison of Cu Production Costs for Selected Countries



From S&P Global, 2022 data



# PROJECT PORTFOLIO

Potential for Growth, Opportunity to Discover

Strong copper-mineralized systems with large hydrothermal footprints, which are at low elevations, close to the Pacific coast, and near infrastructure.

## Elida

- Porphyry Cu-Mo deposit cluster.
- Initial Mineral Resource Estimate issued in 2022.

## Flor de Cobre

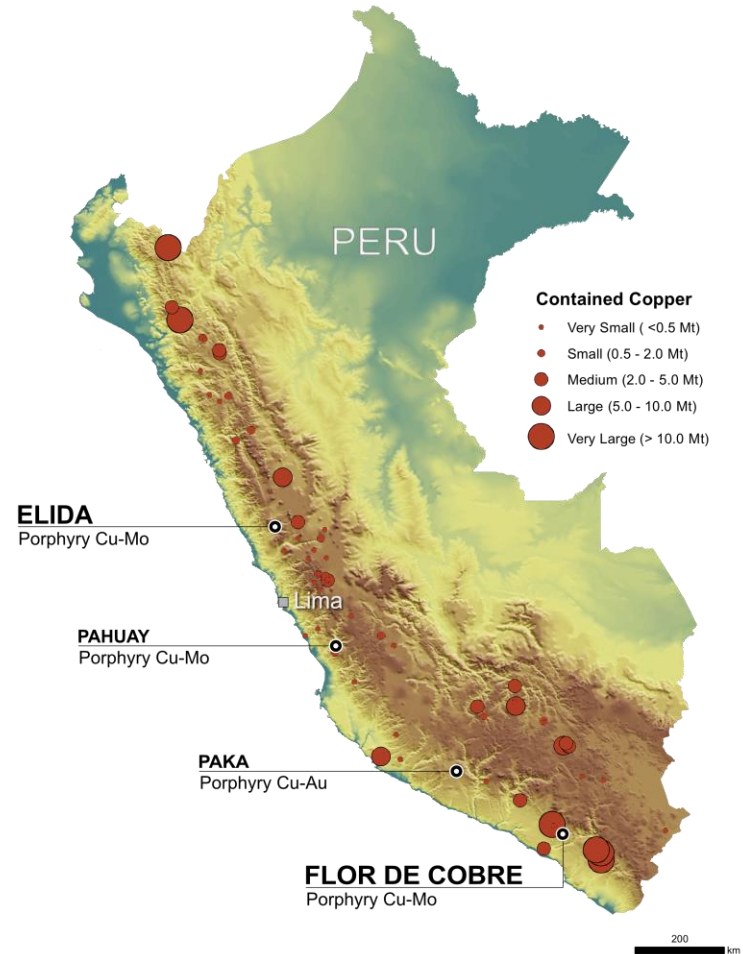
- Large porphyry Cu-Mo system.
- Enrichment and primary sulphide potential.

## Paka

- Porphyry Cu-Au skarn system.
- High grade Cu mineralization exposed on the edge of cover.

## Pahuay

- Porphyry Cu-Mo skarn system.
- Large untested target.







# ELIDA PROJECT

# Elida Project

## LOCATION ADVANTAGES



LOWER ELEVATION (~1,600 M)



TRANSPORTATION ROUTES



ELECTRICAL GRID



PORTS



HYDROELECTRIC STATION (45 MW)



SKILLED WORKFORCE





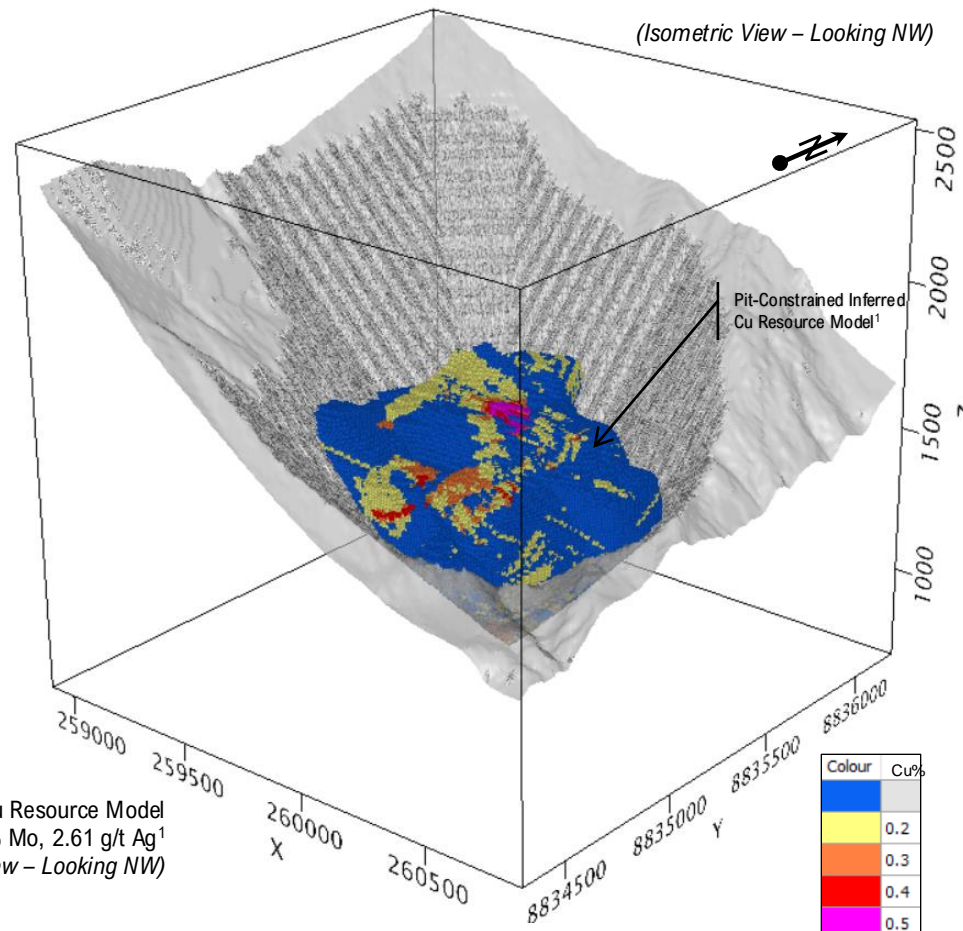
# Elida Copper Project

## INFERRED MINERAL RESOURCE ESTIMATE

### Highlights:

- **Initial Mineral Resource Estimates<sup>1</sup>:**
  - **Pit constrained 321.7 million inferred tonnes at 0.32% Cu, 0.03% Mo, 2.61 g/t Ag** delineated in Zone 1 using a 0.74:1 strip ratio and 0.20% Cu cut-off grade.
  - Near surface, higher-grade subset of the Inferred Mineral Resources consisting of:
    - 59.7 million inferred tonnes at 0.49% Cu, 0.04% Mo, 3.99 g/t Ag (using a 0.40% Cu cut-off grade).
    - 34.1 million inferred tonnes at 0.55% Cu, 0.04% Mo, 4.4 g/t Ag. (using a 0.45% Cu cut-off grade).

Pit-Constrained Inferred Cu Resource Model  
321.7 Mt @ 0.32% Cu, 0.03% Mo, 2.61 g/t Ag<sup>1</sup>  
(Isometric View – Looking NW)



#### Notes:

1. Mineral Resource Estimate information is available in "NI 43-101 Technical Report, Mineral Resource Estimation of the Elida Porphyry Copper Project in Peru" dated September 20, 2022, and prepared in accordance with Form 43-101F1 by Marc Jurás, P.Eng., M.A.Sc., Ginto Consulting Inc., a Qualified Person as defined in National Instrument 43-101 Standards of Disclosure for Mineral Projects, who is independent of Element 29 Resources Inc.

# Elida Copper Project

## EXPLORATION POTENTIAL

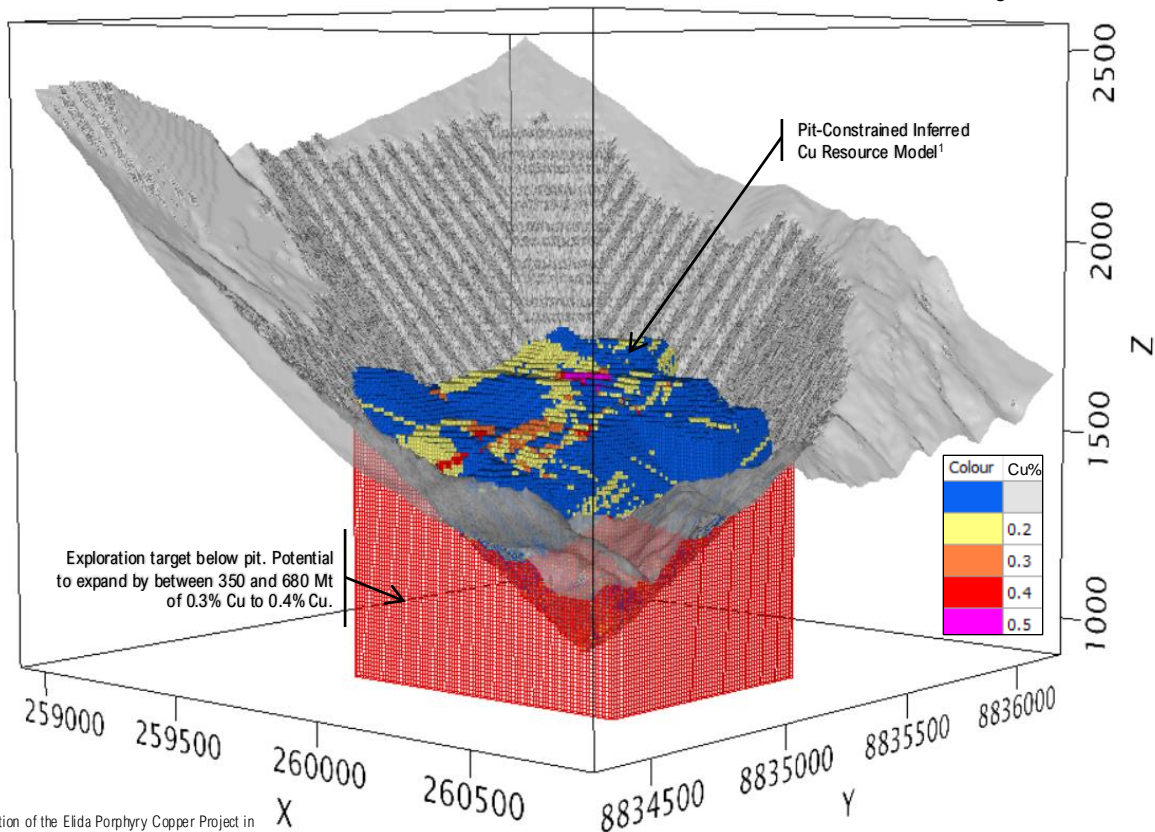
Isometric View – Looking NW

### Exploration Target:

- Exploration target with potential to expand outside of the pit shell by between 350 and 680 million tonnes of 0.3% Cu to 0.4% Cu.

### Disclosure:

The potential quantity and grade are conceptual in nature and there has been insufficient exploration to increase the overall inferred resource estimate grades or to define a mineral resource outside of the existing pit shell and it is uncertain if further exploration will result in the target being delineated as a mineral resource. However, several drill holes have been completed that show the continuation of the copper mineralization outside of the existing pit shell including drill hole ELID025<sup>2</sup> collared just north of the pit center and intersected 908.75 m of 0.39% Cu, 0.035% Mo, 3.1 g/t Ag (open at depth) suggesting that the existing Cu mineralization extends to depth of more than 900 m from surface.



### Notes:

1. Mineral Resource Estimate information is available in "NI 43-101 Technical Report, Mineral Resource Estimation of the Elida Porphyry Copper Project in Peru" dated September 20, 2022, and prepared in accordance with Form 43-101F1 by Marc Jutras, P.Eng., M.A.Sc., Ginto Consulting Inc., a Qualified Person as defined in National Instrument 43-101 Standards of Disclosure for Mineral Projects, who is independent of Element 29 Resources Inc.
2. Refer to news release "ELEMENT 29 REPORTS FINAL THREE HOLES FROM THE ELIDA PHASE 1 DRILLING AND REPORTS 908.75 METRES OF 0.55% CUEQ" dated January 19, 2022 for results from ELID025.



# Elida Copper Project

## EXPLORATION POTENTIAL

### Significant Exploration Potential:

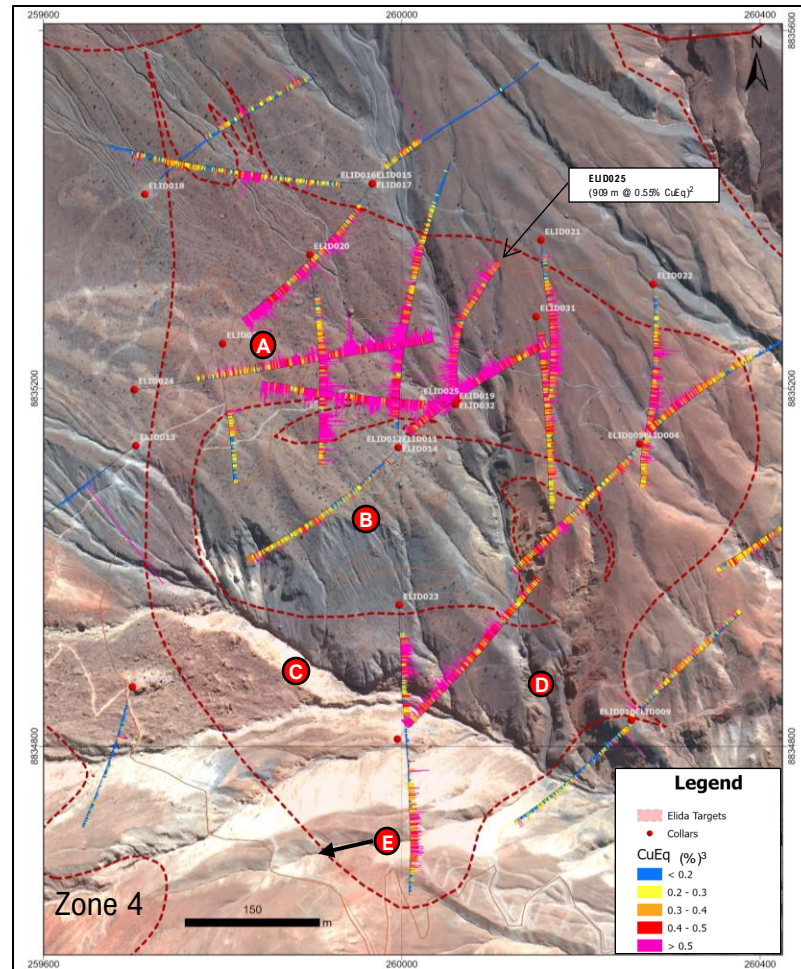
- A. In-fill and expansion on NW side of pit.
- B. Expansion below the pit.
- C. In-fill and expansion on SW side of pit.
- D. In-fill and expansion on E-SE side of pit.
- E. Extension of deep Cu mineralization in ELID023 westward towards Zone 4.

### Disclosure:

The potential quantity and grade are conceptual in nature and there has been insufficient exploration to increase the overall inferred resource estimate grades or to define a mineral resource outside of the existing pit shell and it is uncertain if further exploration will result in the target being delineated as a mineral resource. However, several drill holes have been completed that show the continuation of the copper mineralization outside of the existing pit shell including drill hole ELID025<sup>2</sup> collared just north of the pit center and intersected 908.75 m of 0.39% Cu, 0.035% Mo, 3.1 g/t Ag (open at depth) suggesting that the existing Cu mineralization extends to depth of more than 900 m from surface.

### Notes:

1. Mineral Resource Estimate information is available in "NI 43-101 Technical Report, Mineral Resource Estimation of the Elida Porphyry Copper Project in Peru" dated September 20, 2022, and prepared in accordance with Form 43-101F1 by Marc Jutras, P.Eng., M.A.Sc., Ginto Consulting Inc., a Qualified Person as defined in National Instrument 43-101 Standards of Disclosure for Mineral Projects, who is independent of Element 29 Resources Inc.
2. Refer to news release "ELEMENT 29 REPORTS FINAL THREE HOLES FROM THE ELIDA PHASE 1 DRILLING AND REPORTS 908.75 METRES OF 0.55% CUEQ" date January 19, 2022 for results from ELID025.
3. The CuEq grades are calculated using  $CuEq = Cu\% + [Mo\% \times 2.3175] + [Ag \text{ g/t} \times 0.0064]$  utilizing metal prices of Cu = US\$3.75/lb, Mo = US\$13.51/lb and Ag = US\$21.63/oz and recoveries of Cu = 85.5%, Mo = 55%, and Ag = 65%.





# FLOR de COBRE PROJECT

# Flor de Cobre Project

IN A PREMIER PRODUCING COPPER DISTRICT



LOWER ELEVATION (~2,700 M)



TRANSPORTATION ROUTES



ELECTRICAL GRID



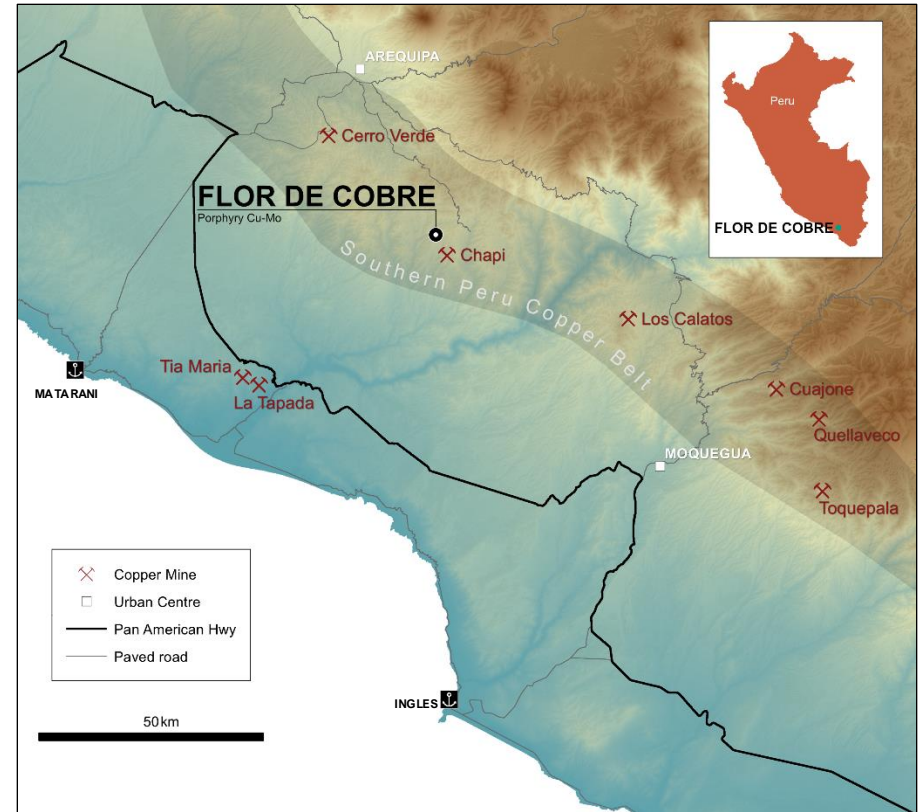
PORTS




MINING SERVICES IN AREQUIPA



SKILLED WORKFORCE



 **Cerro Verde Cu-Mo Mine**  
Freeport McMoRan  
26 km to the northwest.

 **Chapi Cu Mine**  
Nexa Resources Peru S.A.  
5 km to the southeast.

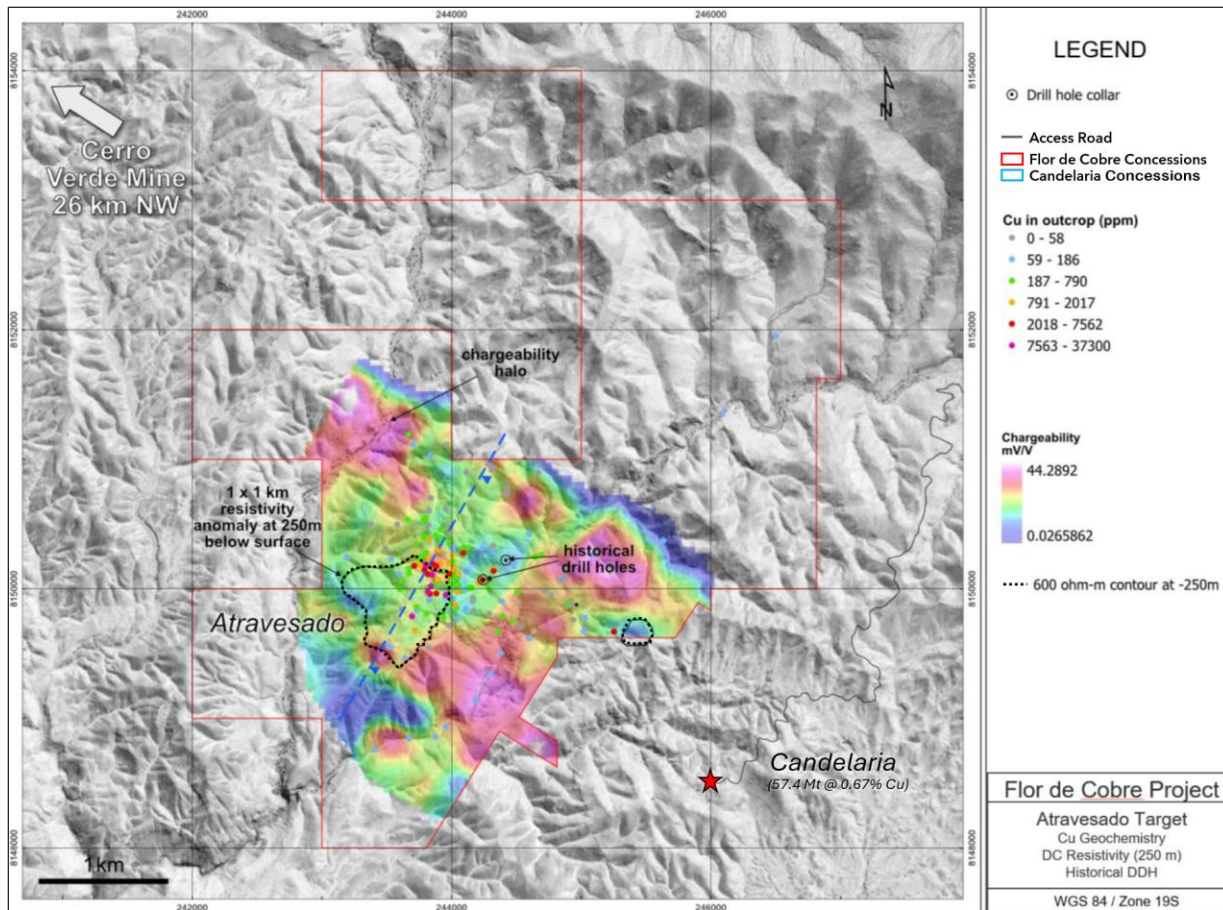


# Flor de Cobre Project

EXPLORATION PROSPECT

## ATRAVESADO PORPHYRY CU-MO PROSPECT

- Geophysical response coincides with anomalous Cu geochemistry, potassic alteration, and A-type quartz veining.
- Historical drilling by Anglo American drilled near the edge of the main target area.
- Target is just 1.5 km to the northwest of the Candelaria deposit with historical resources of 57.4 million tonnes of 0.67% Cu<sup>1</sup>.
- DIA environmental permit received.



Notes:  
1. The source of the historical resource estimate is a press release issued by Rio Amarillo Mining Ltd. dated November 15, 1996 (Rio Amarillo Mining Ltd., November 15th, 1996: Aija Property Drill Results).



# COPPER PROJECT PIPELINE

# Copper Project Pipeline

EXTENSION OF THE PALEOCENE ARC - NORTH



LOWER ELEVATION (~3000 M)



TRANSPORTATION ROUTES



ELECTRICAL GRID



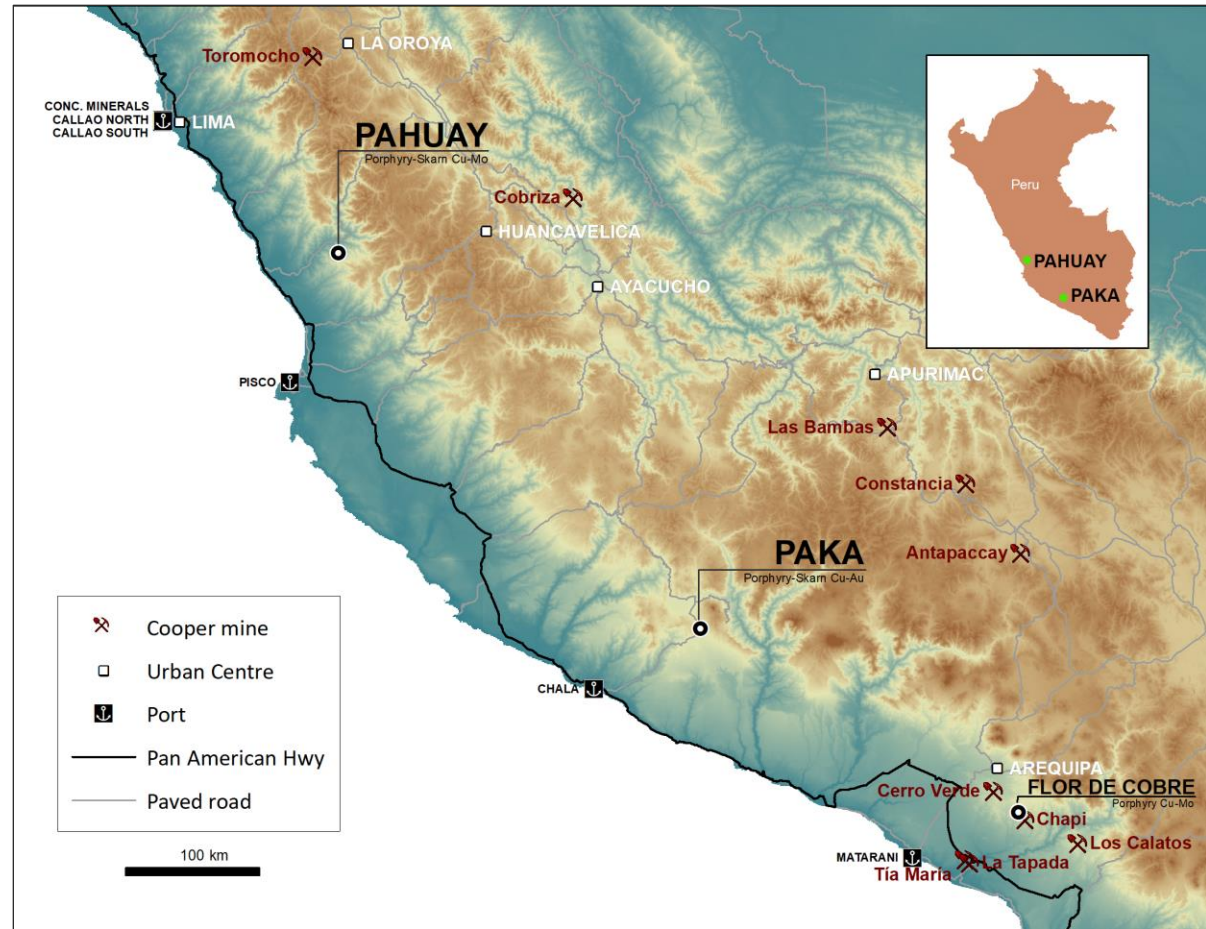
PORTS



MINING SERVICES



SKILLED WORKFORCE

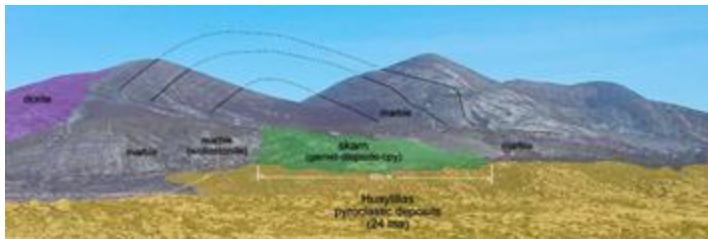




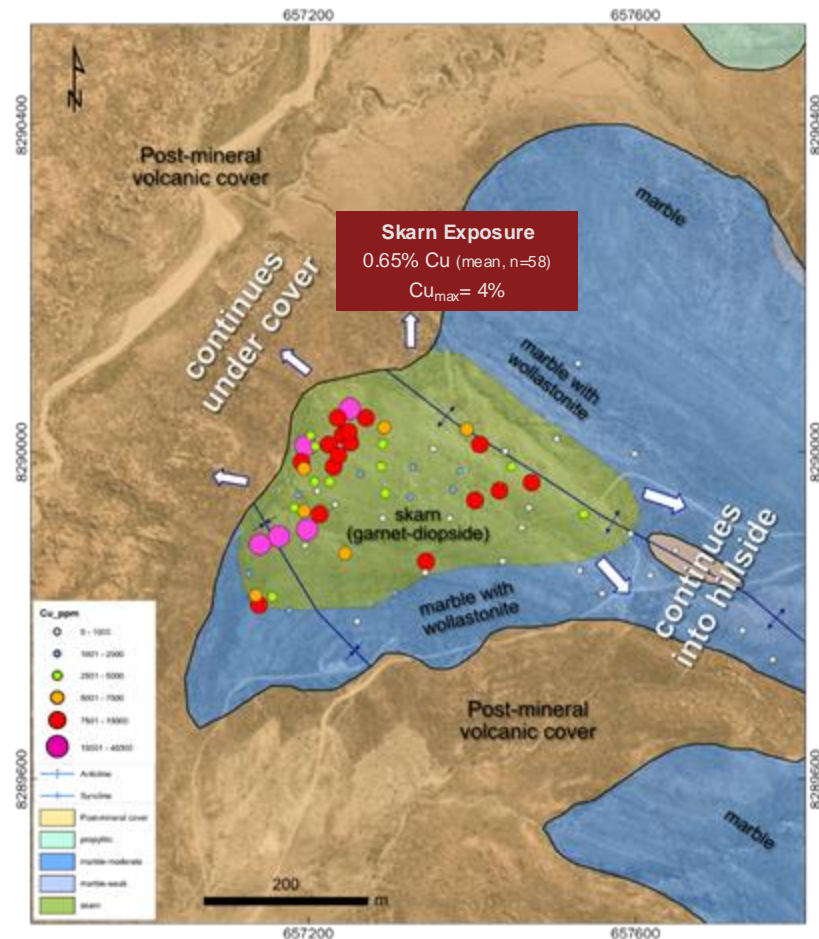
# Paka

## CU-AU PORPHYRY SKARN

- Skarn outcrops (450 x 250m) that continues to the northwest under post-mineral volcanic cover.
- 4.3 x 1.3 km porphyry skarn related hydrothermal alteration footprint.
- Paleocene age mineralization based on field relationships.
- 1,000 ha concession located in the northwest extension of the Southern Peru Copper Belt.
- Drill permitting process to start in 2024.



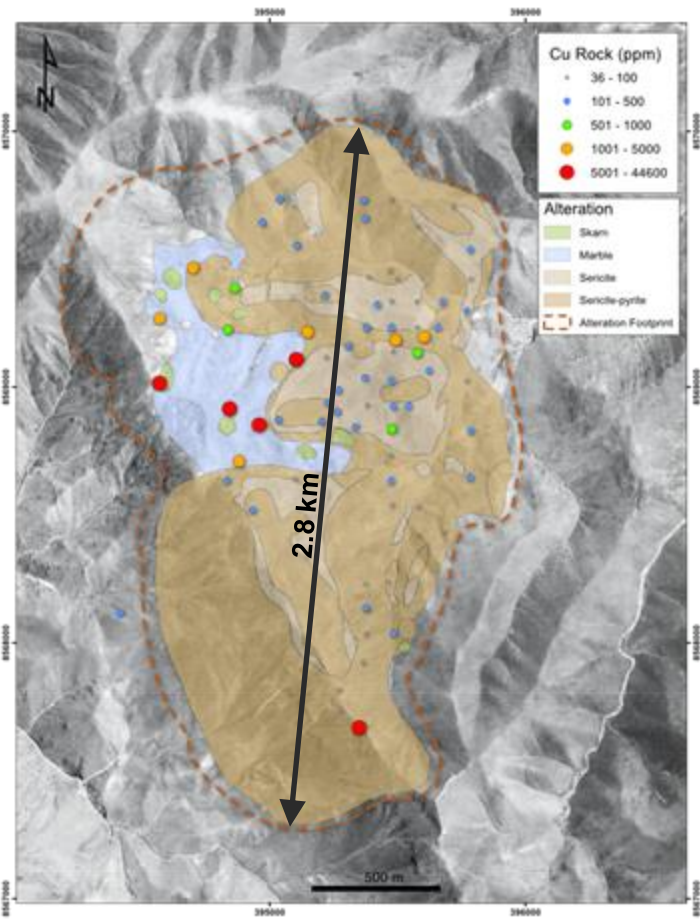
$Cu=1.08\%$ ,  $Au=0.56\text{ g/t}$   
 $Ag=12.3\text{ g/t}$ ,  $Zn=0.20\%$



# Pahuay

## CU-MO PORPHYRY SKARN

- Upper potassic zone exposed leaving potential for fully preserved porphyry skarn system at depth.
- 2.8 x 1.7 km porphyry-related hydrothermal alteration footprint, not drill tested.
- Upper Cretaceous host rocks constrains mineralization age to Paleocene or younger.
- 1,000 ha concession located in the northwest extension of the Southern Peru Copper Belt.
- Access permit approval in 2024.





# ESG and Sustainability Best Practices

- Sustainability encompasses best practices in ethical conduct, health-safety-security, environmental management, community engagement, and human rights.
- Best Practices for responsible exploration including a commitment to:
  - Ethical conduct and the promotion of honesty, integrity, transparency, and accountability.
  - Creating an injury free workplace so that all our employees, contractors and visitors get home safely.
  - Environmental stewardship by minimizing our footprint and disturbances to the land, air and water.
  - Support social and economic development of the host communities.
  - Respect the culture, values and human rights of all peoples.
  - Ensure compliance with all applicable legal and regulatory requirements.



Monitoring baseline water quality and minimizing our environmental footprint by recycling waste and protecting our air by reducing our carbon footprint through the use of solar panels where feasible.



Minimizing our environmental footprint and protecting+preserving land+water by using membranes to protect against drill-site spills and to recover-recycle used water as well as protecting indigenous plant species.



Worksite health and safety training provided to a staff of up to 64 people employed from the local communities during the Elida and Flor de Cobre drilling programs.

# Catalyst-Driven 2024 Work Plan<sup>1</sup>

EXPANDING CU RESOURCES

## SUMMARY

- Elida drill permit in place to start Phase 3 drill program.
- Potential to significantly expand and improve grade on existing Elida pit-constrained inferred mineral resource estimate.
- Metallurgical test work planned at Elida in Q3 to determine Cu-Mo-Ag recoveries.
- Drill permits expected for Atravesado by late Q3 with expectations of drilling by Q2, 2025.

Catalysts		2024			2025
		Q2	Q3	Q4	Q1
ELIDA	Phase 3 Drill Program			Planned	
	Metallurgical Test Work		Completed		
	Update 43-101 Resource Model				Planned
FLOR de COBRE	Drill Permitting - Atravesado	Completed			
	Geological Field Program		Completed		
PAKA	Start Drill Permitting Process		Planned	Planned	Planned
PAHUAY	Access Agreement			Planned	
		Completed	Completed	Planned	Planned

Notes:

1. Subject to financing.



# ELEMENT 29

RESOURCES

## Contact

---

RICHARD OSMOND


President & CEO

1-888-246-7881

info@e29copper.com

[www.e29copper.com](http://www.e29copper.com)

– Follow us Twitter 

– Connect with us on LinkedIn 

– Watch us on YouTube 